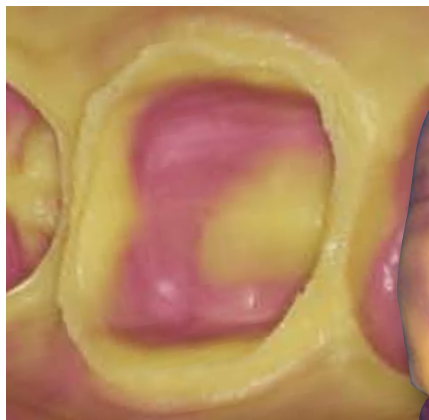
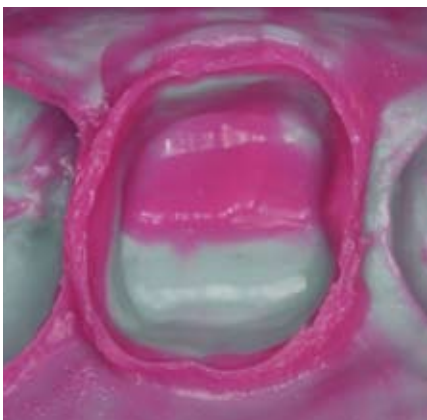


3M™ ESPE™ Impregum™ Polyether Impression Materials.
Photos courtesy of Jorge Perdigao, DMD, and Holmer Meiser, DDS, University of Minnesota.

Guidelines for a Good Impression

Making an accurate and detailed impression is the first and most important step in creating superior prosthetic restorations for your patients. A good impression will have the following:

1. Uniform, homogeneous mix of material
2. Tray is sufficiently filled with impression material
3. Thoroughly applied tray adhesive
4. Rigid, sturdy impression tray
5. No voids or pulls on margin detail
6. Detailed margins with no tears or rough surfaces
7. No tray show-through of the impression material
8. Good blend between heavy body and light body materials
9. Strong bond between impression material and tray
10. No tooth contact with the tray
11. Complete information about the impression material used provided to the dental laboratory



3M™ ESPE™ Imprint™ 3 VPS Impression Materials.
Photos courtesy of Dr. Med. Dent Gunnar Reich, Munich, Germany.